



### 33 The Esplanade CRONULLA NSW

Literally positioned a few foot steps to the waters edge this one bedroom unit is the ultimate beach side pad.

- Neat and tidy kitchen with floorboards
- Spacious lounge with a large sundrenched North facing window
- Bright and spacious bedroom
- Well maintained bathroom
- Footsteps to Esplanade
- Walking distance to Cronulla Central

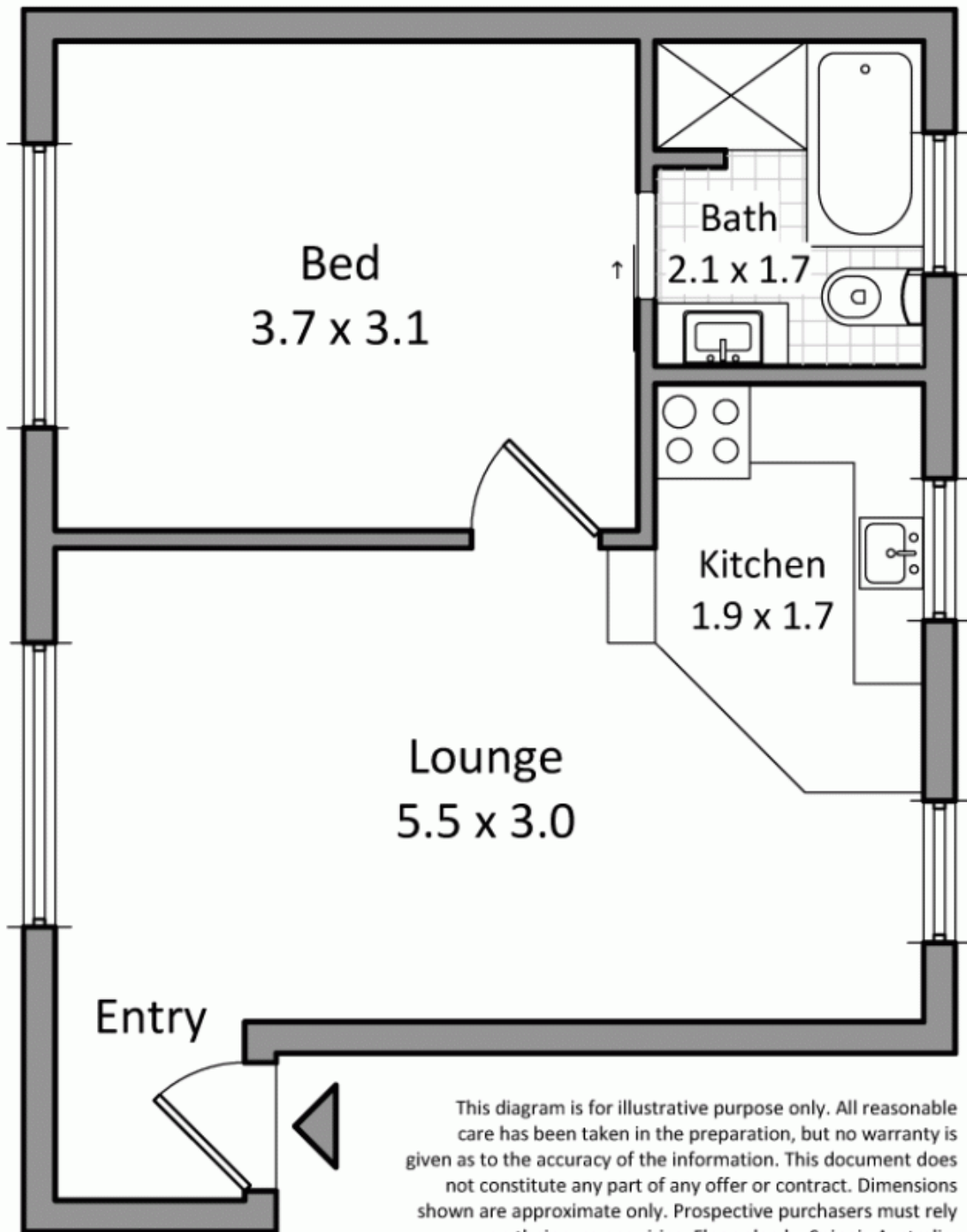
1 1

**View** : <https://www.cronullarealestate.com.au/lease/nsw/sutherland/cronulla/residential/unit/5721211>



**Property Management Team**  
**02 9523 9422**

# 2/33 The Esplanade, Cronulla



This diagram is for illustrative purpose only. All reasonable care has been taken in the preparation, but no warranty is given as to the accuracy of the information. This document does not constitute any part of any offer or contract. Dimensions shown are approximate only. Prospective purchasers must rely on their own enquiries. Floor plan by Spinpix Australia.

