

6/21 Searl Road Cronulla NSW

3  1  2 

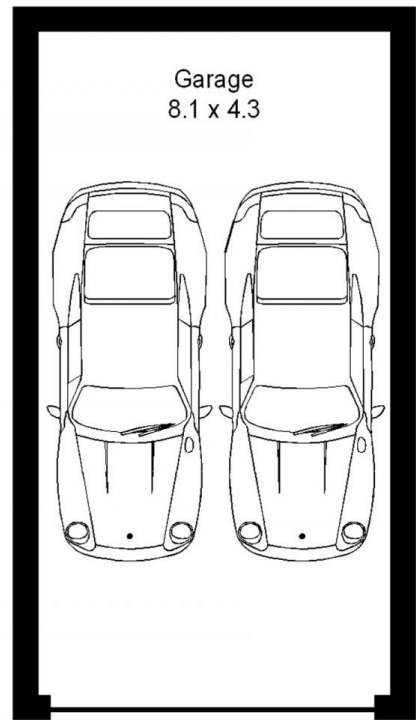
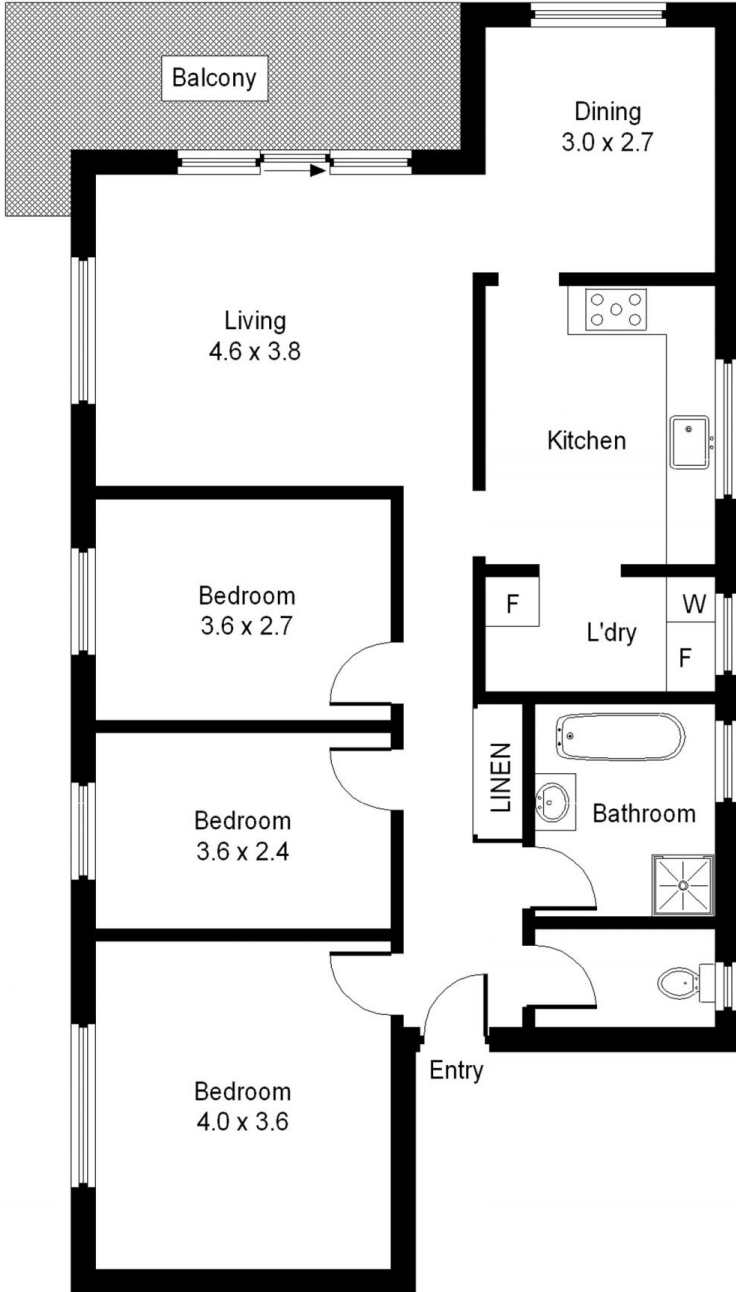
Sensational top floor position with tree top outlook to Gunnamatta Bay this well presented apartment is close to everything you could possibly need.

- Freshly painted interiors throughout and timber flooring
- Spacious living area bathed in natural light
- Large undercover wrap around balcony with bay views
- Generous kitchen with gas cooking and ample storage space
- Renovated bathroom with bath and frameless shower screen and a separate toilet
- Complete with an internal laundry and a double lock up garage
- Set in a boutique block of six with only one common wall

View : <https://www.cronullarealestate.com.au/lease/nsw/sutherland/cronulla/residential/unit/5721261>



Property Management Team
02 9523 9422



Garage

(Not Shown In Actual Location / Orientation)