



1103/20 Gerrale Street Cronulla NSW

2  2  1 

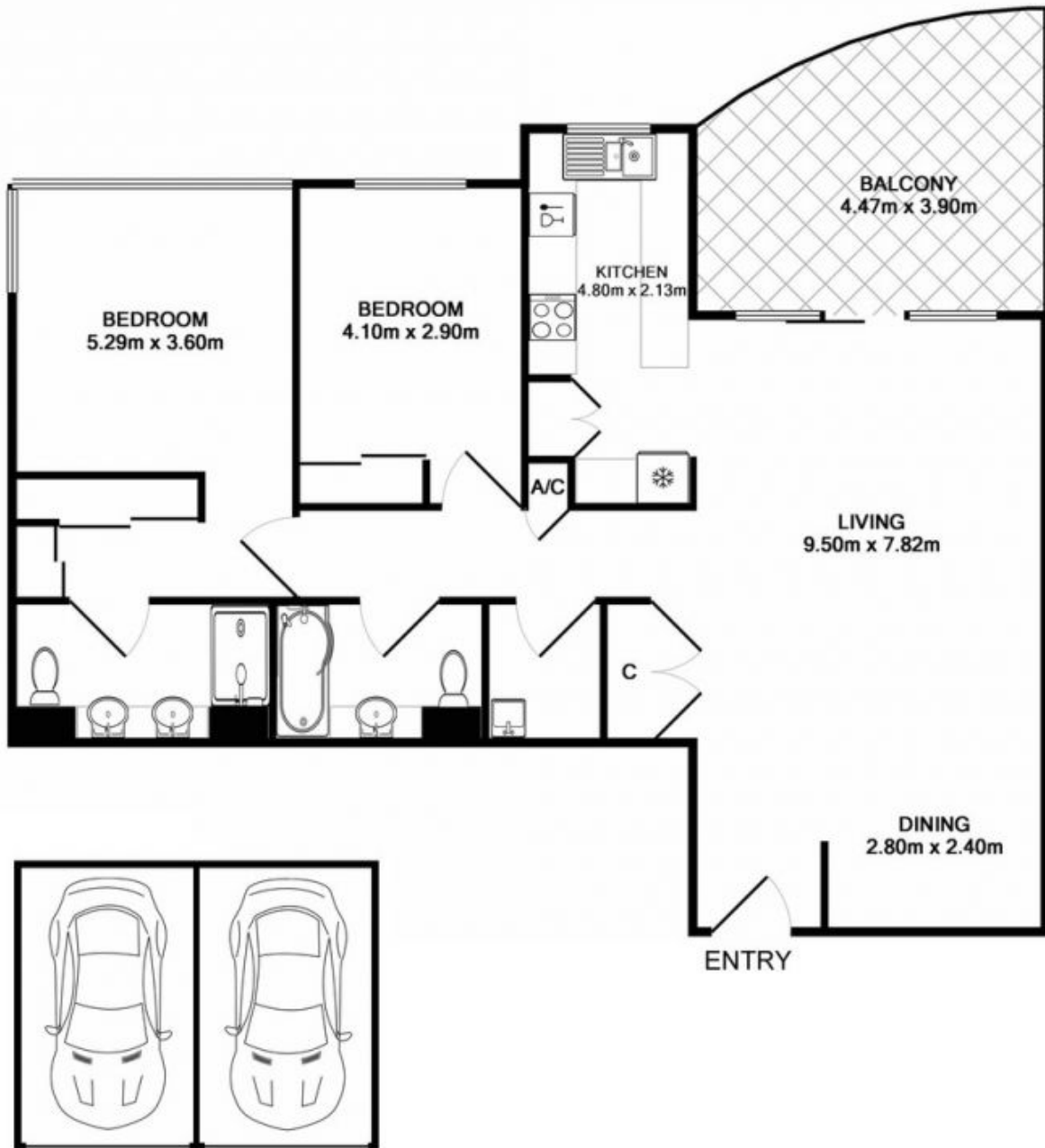
Located in the highly sort after Cecil Apartment Building and occupying the most desirable North/East Aspect on the 11th floor. This incredible apartment boasts uninterrupted 180 degree ocean views, tasteful and light filled interiors throughout. Centrally located with shops, cafes, restaurants, beaches and transport all at your doorstep, this property provides a lifestyle that is seldom achievable.

- Occupying the 11th floor, North East corner with lift access
- 180 degree uninterrupted ocean views from every room
- Open plan living & dining opening to entertainers balcony
- Modern kitchen with stone benches and stainless steel appliances
- Master suite with walk-in-robe and large ensuite
- Well presented main bathroom and separate internal laundry

View : <https://www.cronullarealestate.com.au/lease/nsw/sutherland/cronulla/residential/unit/5722149>



**Property Management Team
02 9523 9422**



Double Lock Up Garage



1103/20 Gerrale Street Cronulla

DISCLAIMER: PLANS SHOWN ARE FOR PRESENTATION PURPOSES AND ARE NOT PART OF ANY LEGAL DOCUMENT. ALL MEASUREMENTS AND FIGURES ARE APPROXIMATE.