



43B Marina Crescent Gymea Bay NSW

3 3 2

Nestled within easy reach of the water's edge and enjoying peaceful water & bushland views, this beautifully renovated tidal waterfront home offers an exceptional standard of living in tranquil & relaxed surrounds. A highly versatile floorplan providing dual living on separate levels, catering for multigenerational living.

- Floor to ceiling windows on both levels capturing an abundance of natural light
- Seamless flow between multiple indoor & outdoor living areas on both levels
- Versatile floorplan providing dual living on separate levels
- Two modern Caesar stone kitchens & three modern bathrooms
- Three spacious bedrooms, master with walk-in-robe & ensuite
- Terraced rear yard with easy access to water's edge &

Land Size : 695.6 sqm
View : <https://www.cronullarealestate.com.au/lease/nsw/sutherland/gymea-bay/residential/house/7234682>

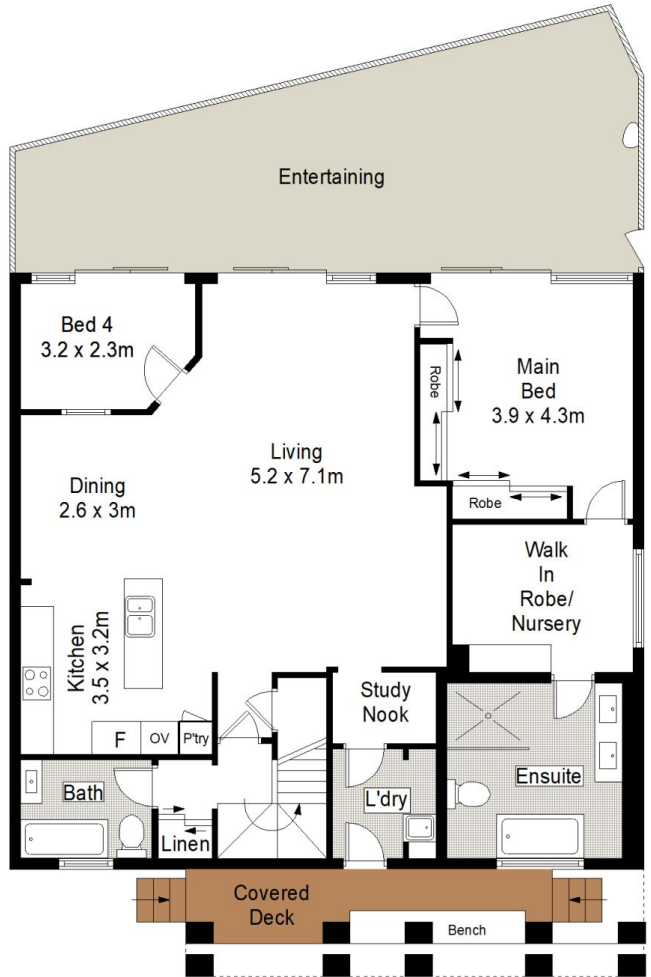


Property Management Team
02 9523 9422

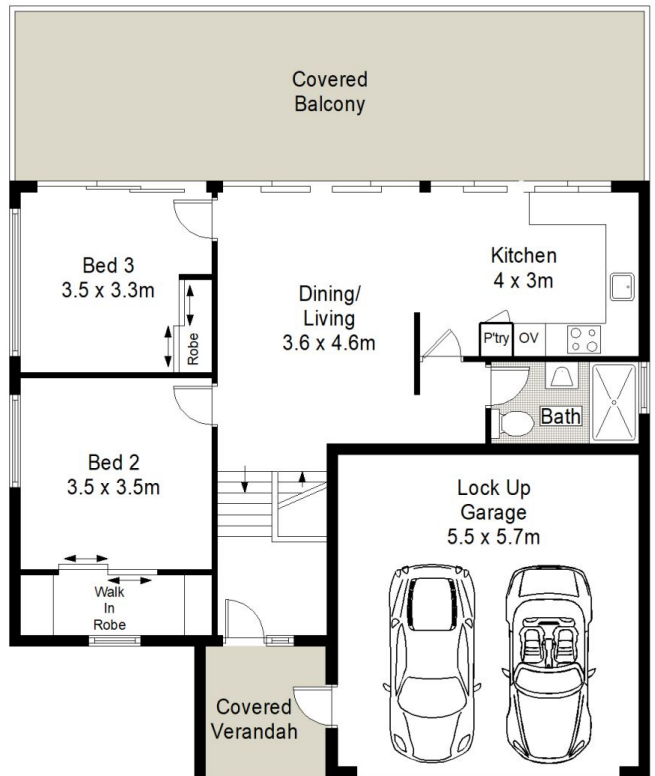


SITE PLAN (NOT TO SCALE)

0 1 2 3 4 5
SCALE IN METERS.



LOWER GROUND FLOOR



GROUND FLOOR

43b Marina Crescent, Gymea Bay

4 3 2

