



12/81 Denman Avenue Woollooware NSW

4  2  2 

A great opportunity knocks for those looking for a low maintenance park side lifestyle. This huge four bedroom townhouse with 10ft ceilings is perfectly located only minutes walk to Woollooware shops, schools and station.

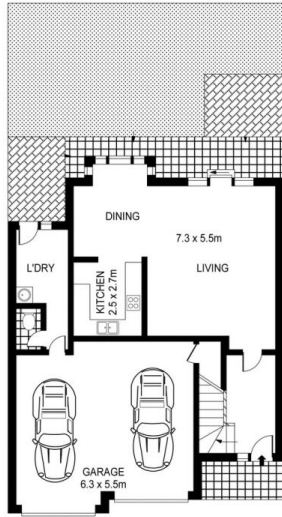
View : <https://www.cronullarealestate.com.au/lease/nsw/sutherland/woollooware/residential/townhouse/7249296>

- Open floor plan with North facing aspect
- Well sized bedrooms all with built-ins and ceiling fans
- Large main with ensuite
- Spacious kitchen with gas cooking
- Separate lounge and dining with air-conditioning
- Well sized laundry with extra toilet
- Generous double garage with internal access
- Entertainers north facing undercover paved area and grassed yard



Property Management Team
02 9523 9422

** Inspection By Appointment **



GROUND FLOOR



FIRST FLOOR



0 1 2 3 4 5 SCALE (METRES)

PLANS SHOWN ONLY INDICATIVE OF LAYOUT. DIMENSIONS ARE APPROXIMATE.
 Floor plan by www.northernlivingprints.com.au

12/81 DENMAN AVENUE

WOOLLOOWARE