



**905/4 Foreshore Boulevard Woolooware NSW**

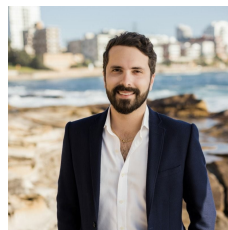
3 2 2

Enviably positioned within the highly sort after 'Crest' in Woolooware Bay's Resort style complex. Combining the perfect blend of luxurious living and a low maintenance lifestyle, This ninth floor apartment offers generous house-like proportions with stunning panoramic bay views that extend towards the city skyline and beyond.

- North facing entertaining balcony with uninterrupted bay and city skyline views
- Awe-inspiring views from almost every room
- Vast glass-embraced living space provides bright and airy sunbathed interiors
- Sophisticated gourmet kitchen with quality appliances & stone benchtops
- Master with walk-in robe, balcony access & ensuite with

[For full version visit the website](https://www.cronullarealestate.com.au)

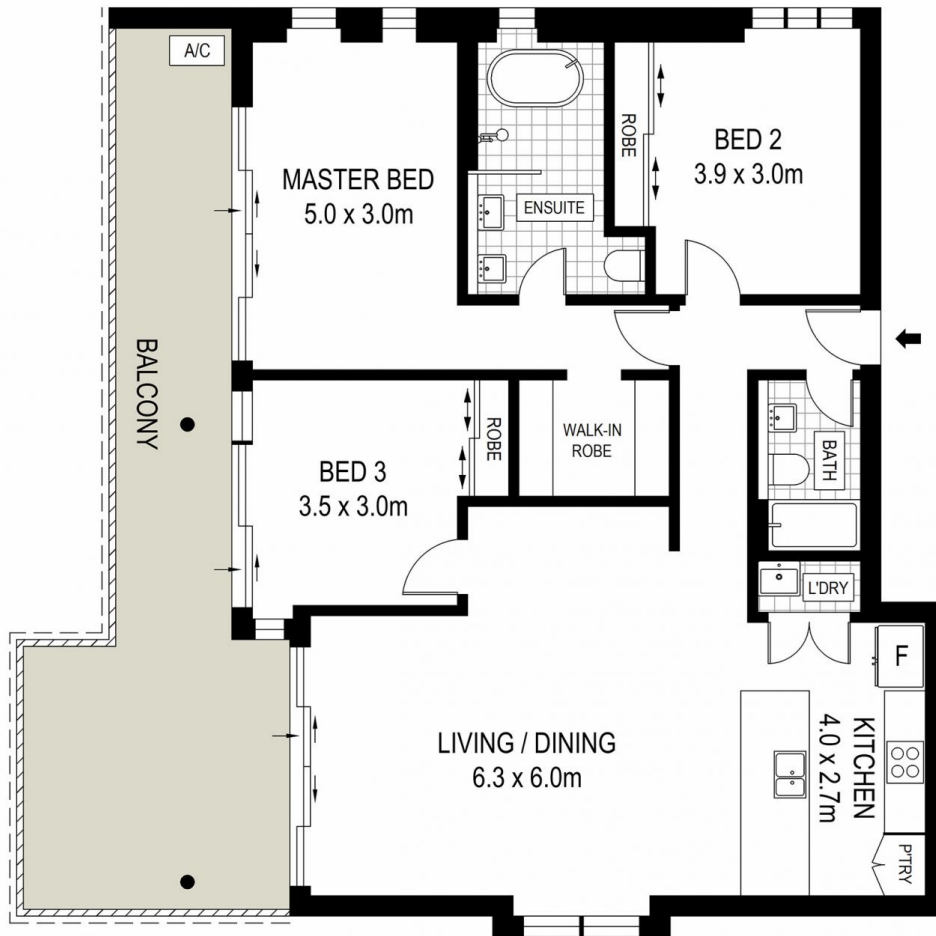
**Type** : Apartment  
**Building Size** : 176 sqm  
**View** : <https://www.cronullarealestate.com.au/sale/nsw/sutherland/woolooware/residential/apartment/8053792>



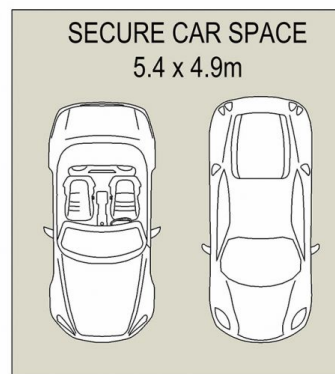
**Corey Bell**  
02 9523 9422



**Jake Whittaker**  
02 9523 9422

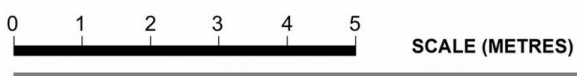


**LEVEL NINE**



STORAGE  
CAGE  
1.8 x 1.5m

**LOWER GROUND**



DISCLAIMER: THIS IS FOR ILLUSTRATIVE PURPOSES ONLY, ALL DIMENSIONS ARE APPROXIMATE AND IT DOES NOT CONSTITUTE PART OF ANY LEGAL DOCUMENTS.

905 / 4 Foreshore Boulevard, Woolooware